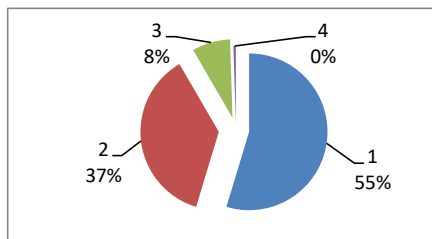


PESQUISA SATISFATÓRIA DO USUÁRIO GSU
01/12//2022
Atendimento Geral

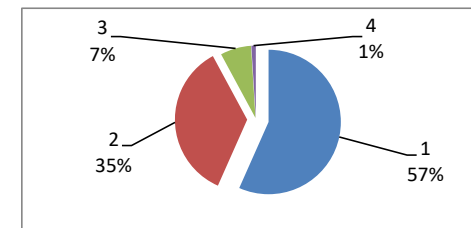
PRONTO-SOCORRO . MÉDICOS

| NOVEMBRO | | |
|--------------|------------|-----|
| Ótimo | 111 | 55% |
| Bom | 75 | 37% |
| Regular | 16 | 8% |
| Ruim | 1 | 0% |
| TOTAL | 203 | |



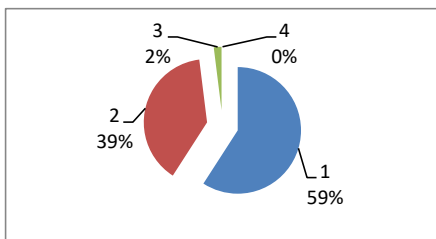
PRONTO-SOCORRO. ENFERMAGEM

| NOVEMBRO | | |
|--------------|------------|-----|
| Ótimo | 115 | 57% |
| Bom | 72 | 35% |
| Regular | 14 | 7% |
| Ruim | 2 | 1% |
| TOTAL | 203 | |



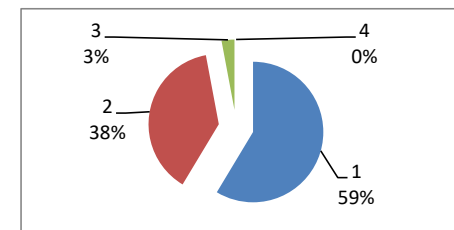
PRONTO-SOCORRO. RECEPÇÃO

| NOVEMBRO | | |
|--------------|------------|-----|
| Ótimo | 120 | 59% |
| Bom | 79 | 39% |
| Regular | 4 | 2% |
| Ruim | 0 | 0% |
| TOTAL | 203 | |



PRONTO-SOCORRO.PORTARIA

| NOVEMBRO | | |
|--------------|------------|-----|
| Ótimo | 119 | 59% |
| Bom | 78 | 38% |
| Regular | 6 | 3% |
| Ruim | 0 | 0% |
| TOTAL | 203 | |



OBS: DEVIDO A PANDEMIA DO NOVO CORONA VIRUS (COVID-19) O NUMERO DE ATENDIMENTOS FORAM REDUZIDOS.