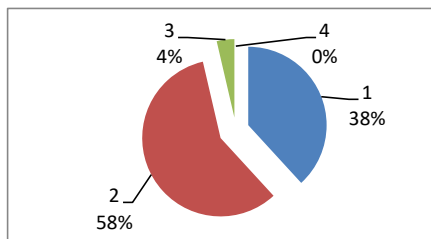


**PESQUISA SATISFATÓRIA DO USUÁRIO GSU**  
 jul/23  
Atendimento Geral

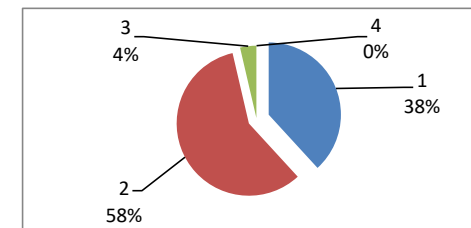
**PRONTO-SOCORRO . MÉDICOS**

ABRIL		
Ótimo	21	59%
Bom	32	34%
Regular	2	6%
Ruim	0	1%
<b>TOTAL</b>	<b>55</b>	



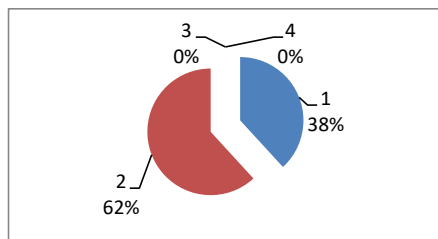
**PRONTO-SOCORRO. ENFERMAGEM**

ABRIL		
Ótimo	21	61%
Bom	32	34%
Regular	2	3%
Ruim	0	2%
<b>TOTAL</b>	<b>55</b>	



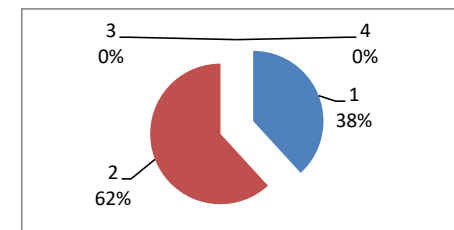
**PRONTO-SOCORRO. RECEPÇÃO**

ABRIL		
Ótimo	21	61%
Bom	34	38%
Regular	0	1%
Ruim	0	0%
<b>TOTAL</b>	<b>55</b>	



**PRONTO-SOCORRO.PORTARIA**

ABRIL		
Ótimo	21	62%
Bom	34	37%
Regular	0	1%
Ruim	0	0%
<b>TOTAL</b>	<b>55</b>	



OBS: DEVIDO A PANDEMIA DO NOVO CORONA VIRUS (COVID-19) O NUMERO DE ATENDIMENTOS FORAM REDUZIDOS.