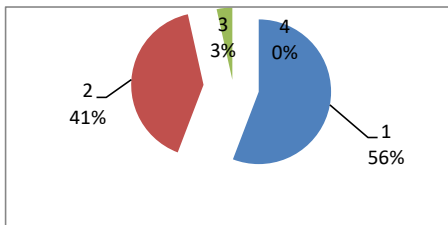




PESQUISA SATISFATÓRIA DO USUÁRIO GSU
jun/22
Atendimento Geral

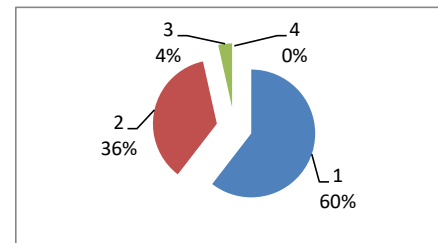
AMBULATÓRIO - MÉDICOS

JUNHO		
Ótimo	48	56%
Bom	35	41%
Regular	3	3%
Ruim	0	0%
TOTAL	86	



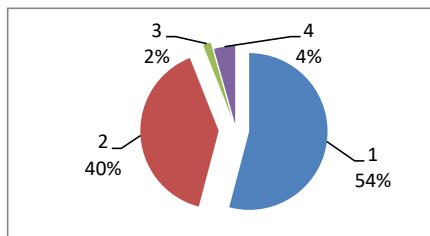
AMBULATÓRIO - FUNCIONÁRIOS

JUNHO		
Ótimo	52	60%
Bom	31	36%
Regular	3	4%
Ruim	0	0%
TOTAL	86	



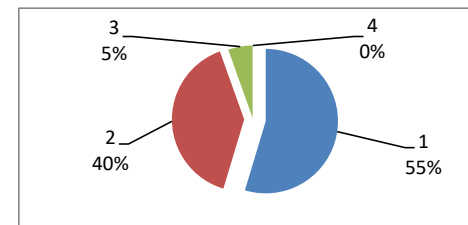
PRONTO-SOCORRO - MÉDICOS

JUNHO		
Ótimo	99	54%
Bom	73	40%
Regular	3	2%
Ruim	8	4%
TOTAL	183	



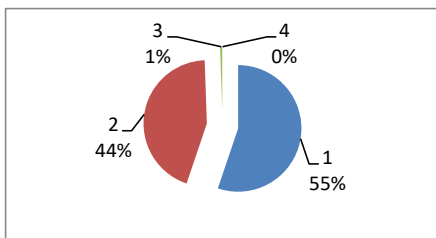
PRONTO-SOCORRO. ENFERMAGEM

JUNHO		
Ótimo	100	55%
Bom	73	40%
Regular	10	5%
Ruim	0	0%
TOTAL	183	



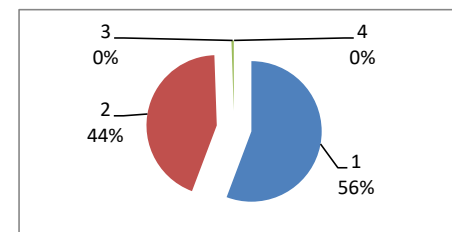
PRONTO-SOCORRO. RECEPÇÃO

JUNHO		
Ótimo	101	55%
Bom	81	44%
Regular	1	1%
Ruim	0	0%
TOTAL	183	



PRONTO-SOCORRO.PORTARIA

JUNHO		
Ótimo	102	56%
Bom	80	44%
Regular	1	0%
Ruim	0	0%
TOTAL	183	



OBS: DEVIDO A PANDEMIA DO NOVO CORONA VIRUS (COVID-19) O NUMERO DE ATENDIMENTOS FORAM REDUZIDOS.