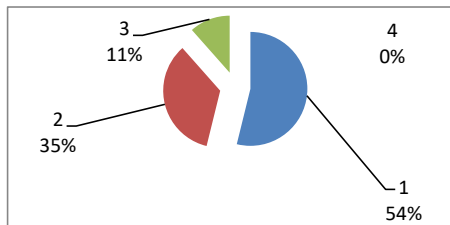




**PESQUISA SATISFATÓRIA DO USUÁRIO GSU**  
**01/07//2022**  
**Atendimento Geral**

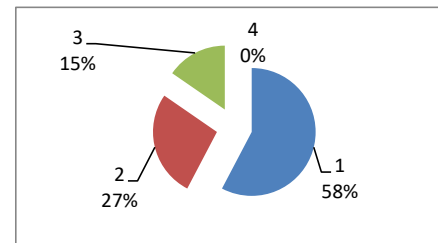
**AMBULATÓRIO - MÉDICOS**

JULHO		
Ótimo	14	54%
Bom	9	35%
Regular	3	11%
Ruim	0	0%
<b>TOTAL</b>	<b>26</b>	



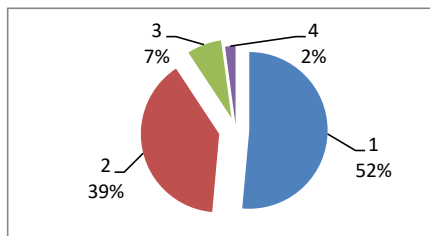
**AMBULATÓRIO - FUNCIONÁRIOS**

JULHO		
Ótimo	15	58%
Bom	7	27%
Regular	4	15%
Ruim	0	0%
<b>TOTAL</b>	<b>26</b>	



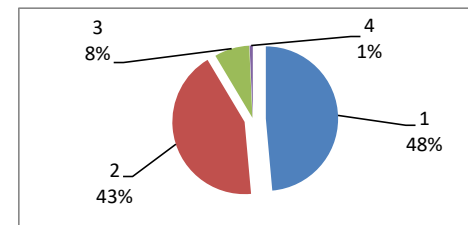
**PRONTO-SOCORRO - MÉDICOS**

JULHO		
Ótimo	72	52%
Bom	55	39%
Regular	10	7%
Ruim	3	2%
<b>TOTAL</b>	<b>140</b>	



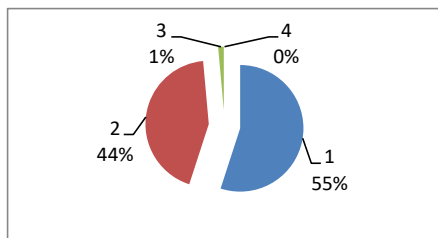
**PRONTO-SOCORRO. ENFERMAGEM**

JULHO		
Ótimo	68	48%
Bom	60	43%
Regular	11	8%
Ruim	1	1%
<b>TOTAL</b>	<b>140</b>	



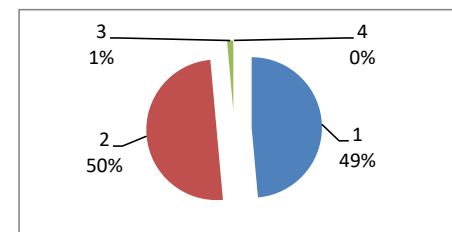
**PRONTO-SOCORRO. RECEPÇÃO**

JULHO		
Ótimo	77	55%
Bom	61	44%
Regular	2	1%
Ruim	0	0%
<b>TOTAL</b>	<b>140</b>	



**PRONTO-SOCORRO.PORTARIA**

JULHO		
Ótimo	68	49%
Bom	70	50%
Regular	2	1%
Ruim	0	0%
<b>TOTAL</b>	<b>140</b>	



OBS: DEVIDO A PANDEMIA DO NOVO CORONA VIRUS (COVID-19) O NUMERO DE ATENDIMENTOS FORAM REDUZIDOS.