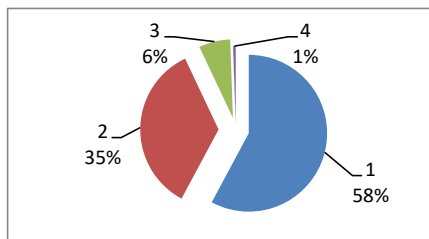


PESQUISA SATISFATÓRIA DO USUÁRIO GSU
abr/23
Atendimento Geral

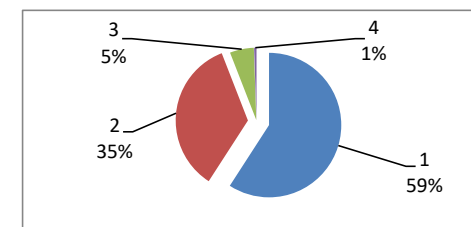
PRONTO-SOCORRO . MÉDICOS

ABRIL		
Ótimo	107	59%
Bom	65	34%
Regular	12	6%
Ruim	1	1%
TOTAL	185	



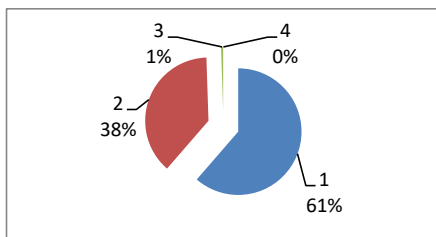
PRONTO-SOCORRO. ENFERMAGEM

ABRIL		
Ótimo	110	61%
Bom	65	34%
Regular	10	3%
Ruim	1	2%
TOTAL	186	



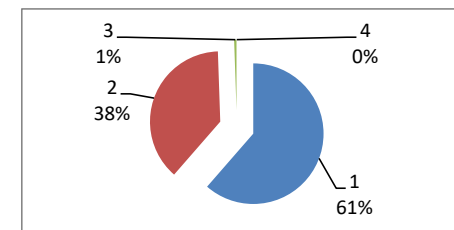
PRONTO-SOCORRO. RECEPÇÃO

ABRIL		
Ótimo	116	61%
Bom	72	38%
Regular	1	1%
Ruim	0	0%
TOTAL	189	



PRONTO-SOCORRO.PORTARIA

ABRIL		
Ótimo	113	62%
Bom	70	37%
Regular	1	1%
Ruim	0	0%
TOTAL	184	



OBS: DEVIDO A PANDEMIA DO NOVO CORONA VIRUS (COVID-19) O NUMERO DE ATENDIMENTOS FORAM REDUZIDOS.