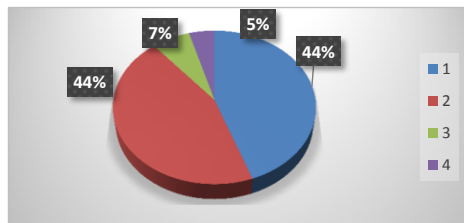


**PESQUISA SATISFATÓRIA DO USUÁRIO GSU**  
**AGOSTO/2.020**  
**Atendimento Geral**

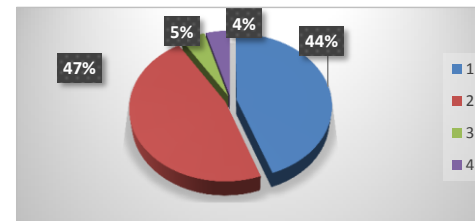
**AMBULATÓRIO - MÉDICOS**

AGOSTO		
Ótimo	20	44%
Bom	20	44%
Regular	3	7%
Ruim	2	5%
<b>TOTAL</b>	<b>45</b>	



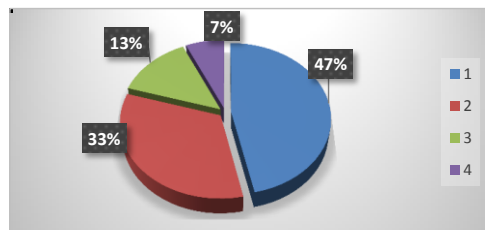
**AMBULATÓRIO - FUNCIONÁRIOS**

AGOSTO		
Ótimo	20	44%
Bom	21	47%
Regular	2	5%
Ruim	2	4%
<b>TOTAL</b>	<b>45</b>	



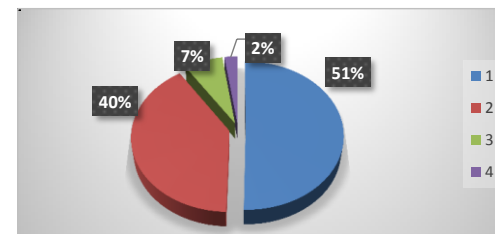
**PRONTO-SOCORRO - MÉDICOS**

AGOSTO		
Ótimo	62	47%
Bom	44	33%
Regular	18	13%
Ruim	9	7%
<b>TOTAL</b>	<b>133</b>	



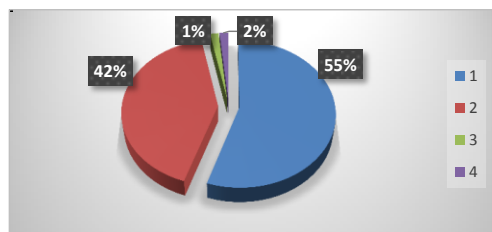
**PRONTO-SOCORRO. ENFERMAGEM**

AGOSTO		
Ótimo	65	51%
Bom	52	40%
Regular	9	7%
Ruim	3	2%
<b>TOTAL</b>	<b>129</b>	



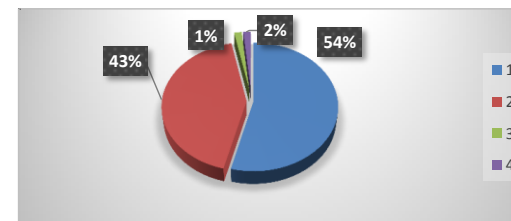
**PRONTO-SOCORRO. RECEPÇÃO**

AGOSTO		
Ótimo	70	55%
Bom	53	42%
Regular	2	2%
Ruim	2	1%
<b>TOTAL</b>	<b>127</b>	



**PRONTO-SOCORRO. PORTARIA**

AGOSTO		
Ótimo	68	54%
Bom	54	43%
Regular	2	2%
Ruim	2	1%
<b>TOTAL</b>	<b>126</b>	



OBS: DEVIDO A PANDEMIA DO NOVO CORONAVIRUS (COVID-19) O NUMERO DE ATENDIMENTOS FORAM REDUZIDOS.