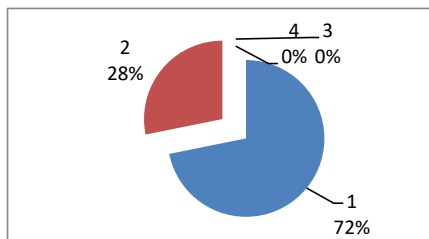


PESQUISA SATISFATÓRIA DO USUÁRIO GSU
out/23
Atendimento Geral

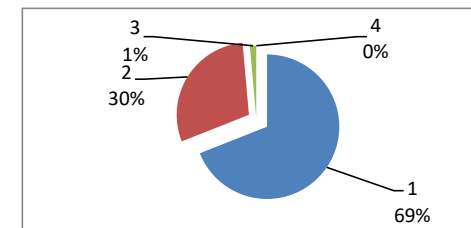
PRONTO-SOCORRO . MÉDICOS

OUTUBRO		
Ótimo	51	59%
Bom	20	34%
Regular	0	6%
Ruim	0	1%
TOTAL	71	



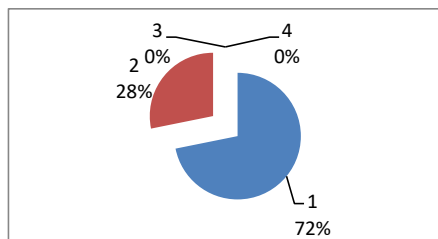
PRONTO-SOCORRO. ENFERMAGEM

OUTUBRO		
Ótimo	49	61%
Bom	21	34%
Regular	1	3%
Ruim	0	2%
TOTAL	71	



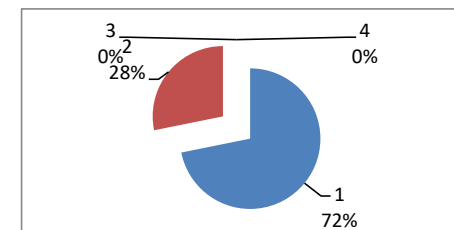
PRONTO-SOCORRO. RECEPÇÃO

OUTUBRO		
Ótimo	51	61%
Bom	20	38%
Regular	0	1%
Ruim	0	0%
TOTAL	71	



PRONTO-SOCORRO.PORTARIA

OUTUBRO		
Ótimo	51	62%
Bom	20	37%
Regular	0	1%
Ruim	0	0%
TOTAL	71	



OBS: DEVIDO A PANDEMIA DO NOVO CORONA VIRUS (COVID-19) O NUMERO DE ATENDIMENTOS FORAM REDUZIDOS.