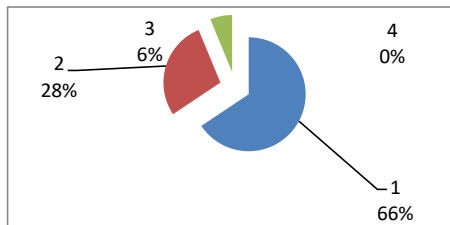




PESQUISA SATISFATÓRIA DO USUÁRIO GSU
01/08//2022
Atendimento Geral

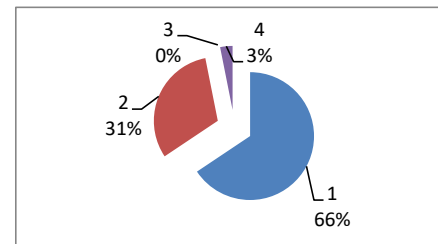
AMBULATÓRIO - MÉDICOS

AGOSTO		
Ótimo	21	66%
Bom	9	28%
Regular	2	6%
Ruim	0	0%
TOTAL	32	



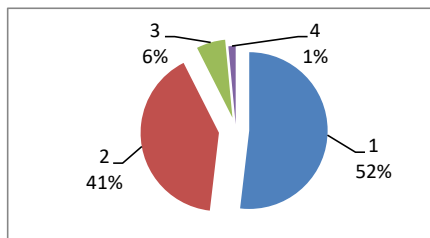
AMBULATÓRIO - FUNCIONÁRIOS

AGOSTO		
Ótimo	21	66%
Bom	10	31%
Regular	0	0%
Ruim	1	3%
TOTAL	32	



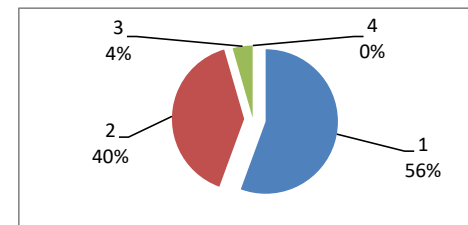
PRONTO-SOCORRO - MÉDICOS

AGOSTO		
Ótimo	139	52%
Bom	109	41%
Regular	16	6%
Ruim	4	1%
TOTAL	268	



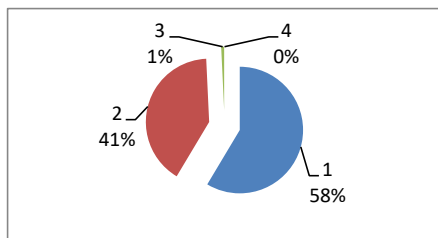
PRONTO-SOCORRO. ENFERMAGEM

AGOSTO		
Ótimo	149	56%
Bom	107	40%
Regular	12	4%
Ruim	0	0%
TOTAL	268	



PRONTO-SOCORRO. RECEPÇÃO

AGOSTO		
Ótimo	157	58%
Bom	109	41%
Regular	2	3%
Ruim	0	0%
TOTAL	268	



PRONTO-SOCORRO.PORTARIA

AGOSTO		
Ótimo	148	55%
Bom	116	43%
Regular	4	2%
Ruim	0	0%
TOTAL	268	

