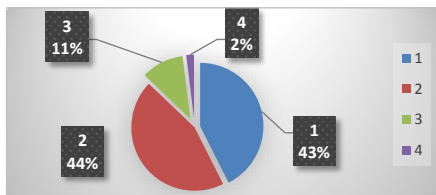


PESQUISA SATISFATÓRIA DO USUÁRIO GSU
JULHO/2.020
Atendimento Geral

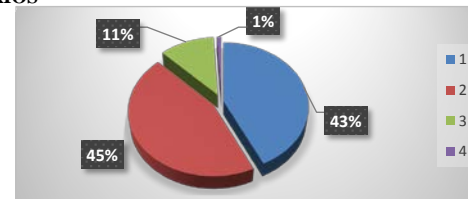
AMBULATÓRIO - MÉDICOS

JULHO		
Ótimo	43	43%
Bom	45	44%
Regular	11	11%
Ruim	2	2%
TOTAL	101	



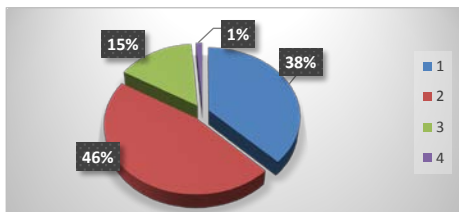
AMBULATÓRIO - FUNCIONÁRIOS

JULHO		
Ótimo	45	44%
Bom	47	45%
Regular	12	11%
Ruim	1	1%
TOTAL	105	



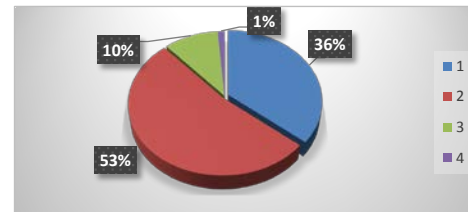
PRONTO-SOCORRO - MÉDICOS

JULHO		
Ótimo	30	38%
Bom	37	46%
Regular	12	15%
Ruim	1	1%
TOTAL	80	



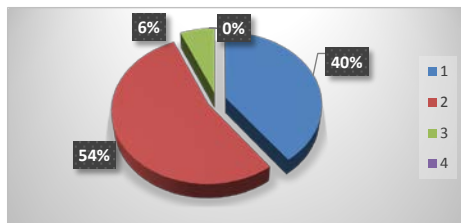
PRONTO-SOCORRO. ENFERMAGEM

JULHO		
Ótimo	28	36%
Bom	41	53%
Regular	8	10%
Ruim	1	1%
TOTAL	78	



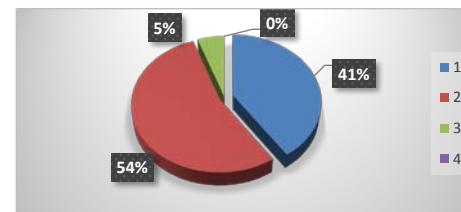
PRONTO-SOCORRO. RECEPÇÃO

JULHO		
Ótimo	31	40%
Bom	42	54%
Regular	5	6%
Ruim	0	0%
TOTAL	78	



PRONTO-SOCORRO.PORTARIA

JULHO		
Ótimo	30	41%
Bom	40	54%
Regular	4	5%
Ruim	0	0%
TOTAL	74	



OBS: DEVIDO A PANDEMIA DO NOVO CORONAVIRUS (COVID-19) O NUMERO DE ATENDIMENTOS FORAM REDUZIDOS.