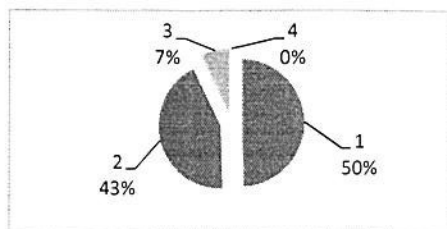


PESQUISA SATISFATÓRIA DO USUÁRIO GSU
NOVEMBRO/2.020
Atendimento Geral

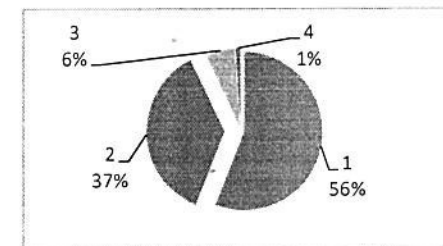
AMBULATÓRIO - MÉDICOS

NOVEMBRO		
Ótimo	48	50%
Bom	42	43%
Regular	7	7%
Ruim	0	0%
TOTAL	97	



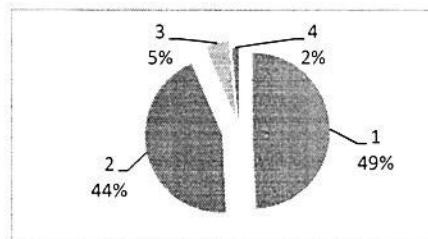
AMBULATÓRIO - FUNCIONÁRIOS

NOVEMBRO		
Ótimo	55	56%
Bom	36	37%
Regular	6	6%
Ruim	1	1%
TOTAL	98	



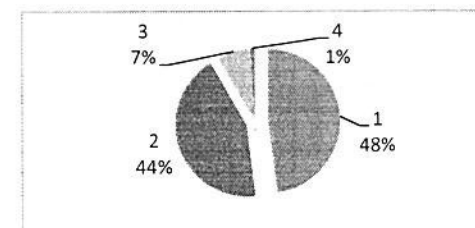
PRONTO-SOCORRO - MÉDICOS

NOVEMBRO		
Ótimo	99	49%
Bom	89	44%
Regular	10	5%
Ruim	3	2%
TOTAL	201	



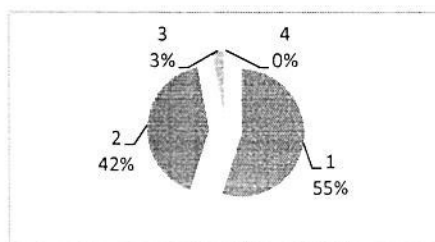
PRONTO-SOCORRO. ENFERMAGEM

NOVEMBRO		
Ótimo	97	48%
Bom	88	44%
Regular	15	7%
Ruim	2	1%
TOTAL	202	



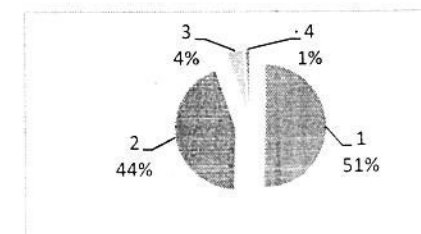
PRONTO-SOCORRO. RECEPÇÃO

NOVEMBRO		
Ótimo	110	55%
Bom	84	42%
Regular	6	3%
Ruim	0	0%
TOTAL	200	



PRONTO-SOCORRO. PORTARIA

NOVEMBRO		
Ótimo	95	51%
Bom	83	44%
Regular	8	4%
Ruim	2	1%
TOTAL	188	



OBS: DEVIDO A PANDEMIA DO NOVO CORONA VIRUS (COVID-19) O NUMERO DE ATENDIMENTOS FORAM REDUZIDOS.