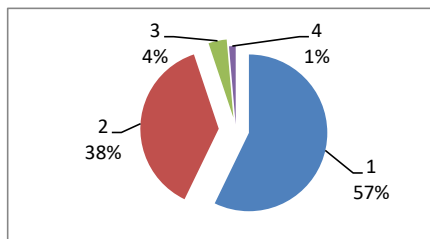


**PESQUISA SATISFATÓRIA DO USUÁRIO GSU**  
01/02//2023  
Atendimento Geral

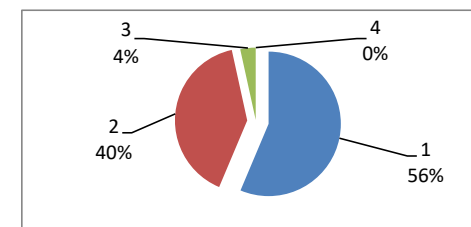
**PRONTO-SOCORRO . MÉDICOS**

JANEIRO		
Ótimo	167	57%
Bom	110	38%
Regular	11	4%
Ruim	4	1%
<b>TOTAL</b>	<b>292</b>	



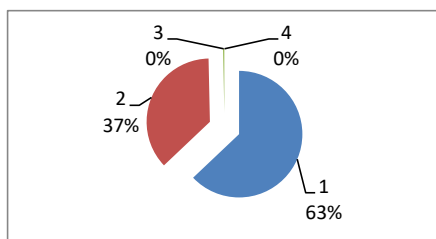
**PRONTO-SOCORRO. ENFERMAGEM**

JANEIRO		
Ótimo	164	56%
Bom	117	39%
Regular	10	4%
Ruim	0	0%
<b>TOTAL</b>	<b>291</b>	



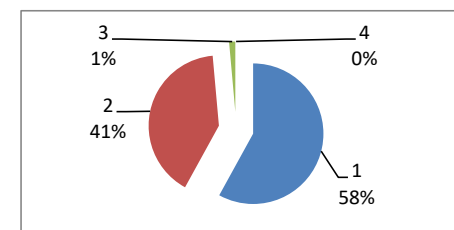
**PRONTO-SOCORRO. RECEPÇÃO**

JANEIRO		
Ótimo	185	63%
Bom	108	37%
Regular	1	0%
Ruim	0	0%
<b>TOTAL</b>	<b>294</b>	



**PRONTO-SOCORRO.PORTARIA**

JANEIRO		
Ótimo	163	58%
Bom	114	41%
Regular	4	1%
Ruim	0	0%
<b>TOTAL</b>	<b>281</b>	



OBS: DEVIDO A PANDEMIA DO NOVO CORONA VIRUS (COVID-19) O NUMERO DE ATENDIMENTOS FORAM REDUZIDOS.